

THE R K P WEAR CLIP FOR JD 1700 & ME5 GAUGE WHEEL ARMS

With the introduction of the John Deere 1700 Series planter in 1998 a new stop mechanism for the gauge wheel arms was created.. This new stop pivoted such that as one arm hit the stop it forced the so the arm down. This change then created the problem of additional wear on the gauge wheel arms at the contact point.

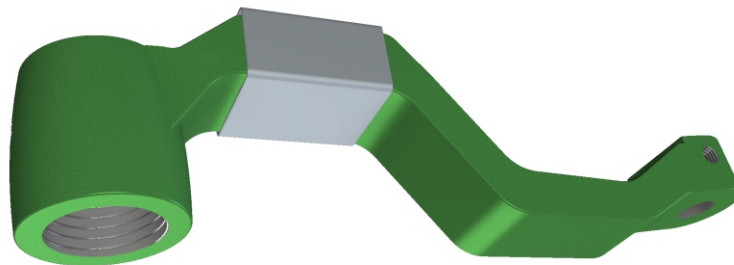
In response to This problem R K Products has crated a "wear clip" that, when placed on the gauge wheel arm, provides a hardened surface protecting the arm.

The clip fits over the arm securely at te contact point between te gauge wheel stop and the arm. the clip is designed to be easy to install and cam be reversed if wear develops at the point where that is necessary.

From this



to This



\$5 / Wear Clip